

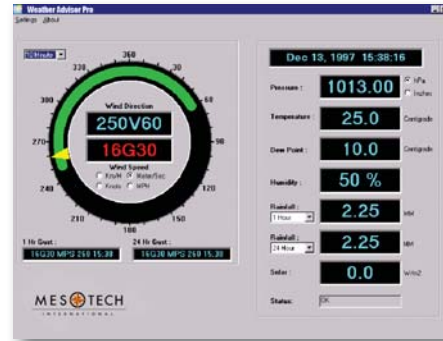
Weather Advisor Pro™ is an easy-to-use program for weather observation and reporting. The software runs on Windows XP and 2003 computers and is designed to work with Mesotech's advanced sensors and data acquisition platforms.

The program's main function is to gather data from one or more field stations and present that data on-screen in a straightforward graphical format. With collected data, you can create standard reports, such as SYNOP and other local formats; edit and approve reports before transmission, logging, or printing; or save data for later analysis. You can complete most data presentation, reporting, and analysis with a single mouse click!

You can modify Weather Advisor Pro's operation and presentation, including the sensors or stations to monitor, the units of measure (metric or US customary), data averaging periods, and logging intervals. The standard version of the program

displays wind speed and direction, wind gusts and variations, barometric pressure, ambient air temperature, dew point temperature, relative humidity, rain fall rate, and solar intensity. Optional add-ons include hydrology sensors and other parameters.

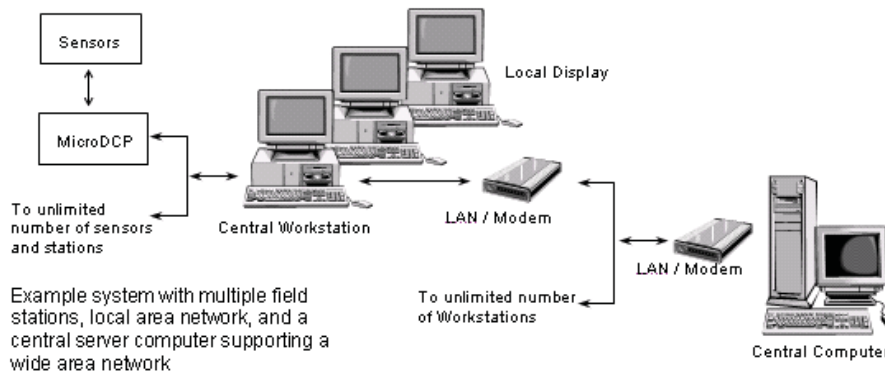
The software works with Mesotech's MicroDCP™ and data acquisition platforms, offering you a fully integrated hardware and software system that is easy to set up and use. You can connect the software to an unlimited number of MicroDCP data acquisition stations and support all of the MicroDCP's communication options, including high-speed wire lines, fiber cable, telephone modems, and RF telemetry. You can then distribute the collected data and observation reports to other computers on a local area network (LAN).



Main display page showing the standard parameters

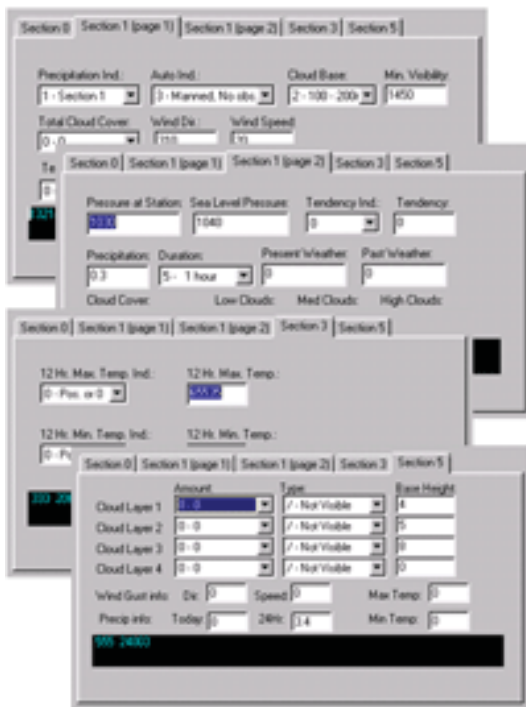
The network server edition of Weather Advisor Pro allows you to manage a wide area network of workstations and data collection stations. The **PC7000BS base station software** will automatically retrieve data and reports from remote PC7000 workstations via telephone modem, LAN, RF telemetry, or across the Internet. This server edition supports Remote Access Service (RAS) to assist you in maintaining the remote workstations and their local networks. RAS essentially maps the remote workstation as a local file system, allowing you to pass files between LANs, send email and reports, or upgrade software.

Weather Advisor Pro supports **configurations with servers and network clustering, hot-standby computers, RAID disk subsystems, and multi-processor architectures.** This capability provides a level of performance and redundancy that can meet your strictest requirements for performance, distribution, and reliability. **All communications**



standards are supported, including Ethernet, TCP/IP protocol, redundant high-speed serial links, and Remote Access Service.

The Weather Advisor Pro software offers two optional reporting modules: report editing and a voice subsystem. With the report editing module, you can fully edit the SYNOP report and other WMO reports, as well as your local reports. Data are automatically installed in a report template, and you can change the parameters or augment the report as needed. The digital voice subsystem provides pre-recorded text-to-



speech conversion of the reports. The reports and collected data are stored to the computer's hard disk in the standard ODBC database

format or CSV spreadsheet format common to Windows data analysis applications. This means you can use your favorite analysis program on the stored files to make your reports.

Weather Advisor Pro's user-friendly graphical interface and network management

capability allows for quick start-up and operation with minimal training, and online help provides step-by-step instructions for all functions.

Technical Specifications

Sensors & Stations:	Unlimited number of sensors Requires MicroDCP
Central Processing:	Single or redundant backup with hot-standby, RAID disks, and NT network clusters
Computer Requirements:	Windows XP, 2003
Data Compliance:	Meets relevant WMO requirements
Configuration:	Programmable by user
Output Reports:	SYNOP and others as options
Voice Reports:	Text-to-speech processing in multiple in multiple languages.
Voice Outputs:	2 or more telephone lines (auto answer), RF transmitters.
Logging and Printing:	Automatic and official reports, sensor data. Intervals selected by user from 1 sec. ODBC files
Local Area Network:	100 BaseT, TCP/IP, 100BaseFL fiber optic, multipoint wire-line, RF
Wide Area Network:	TCP/IP, Remote Access Service
Workstations:	Unlimited number
Display Stations:	Unlimited number (networked version)
Chart Recorders:	Unlimited number
Report Distribution:	Unlimited number ports
Options:	Subsystem for voice reports WMO and local report formats Network configurations

Ordering Options

- Single user version
- Networked user version

